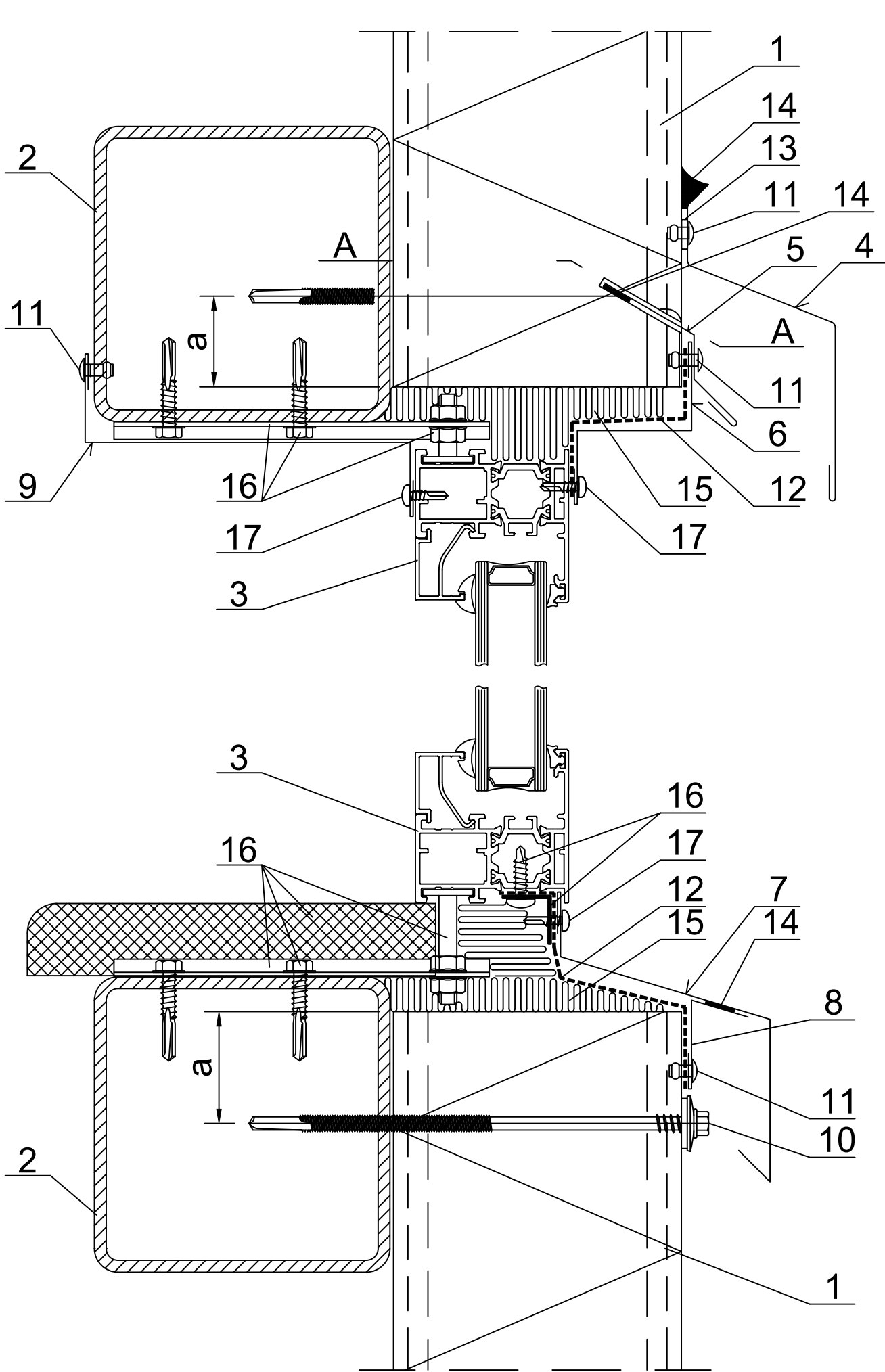
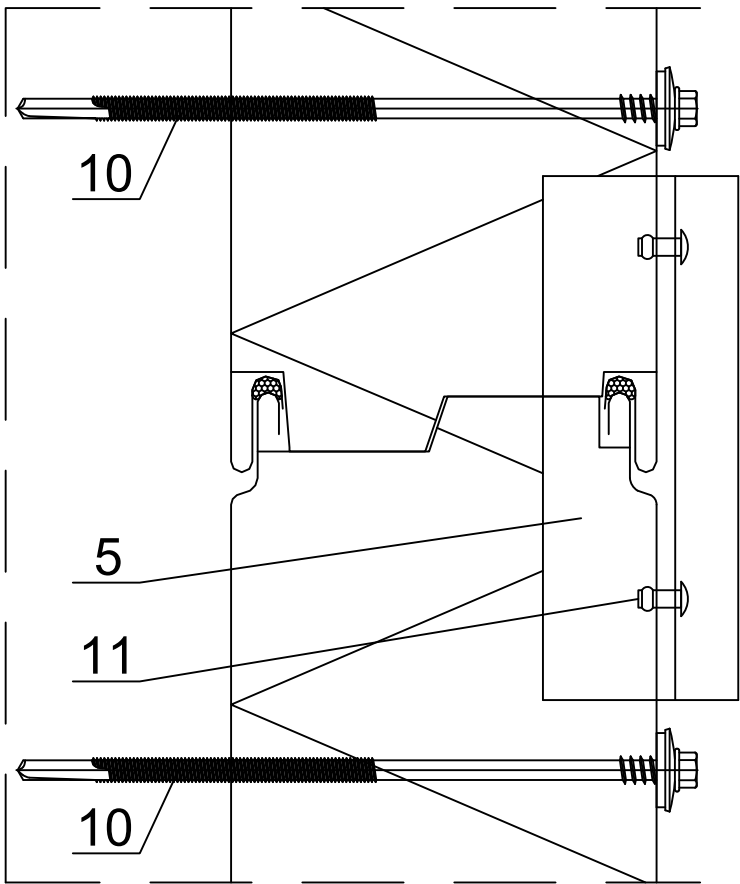


Date	Rev. date	Work nr.	Drw. nr.	Rev.
Drawn by Ruukki	Rev.	N29/S08	-	
Scale 1:2	Building		File nr. P2021/001-00035	



A - A



- 1. Ruukki nSPB W / nSPB WS / nSPB WE / nSPB WF.
- 2. Steel sheeting rail acc. to engineering design of the structure .
- 3. PCV window.
- 4. EA1B07 Ruukki flashing.
- 5. EA1B33 drip wall flashing.
- 6. Custom ordered flashing .
- 7. Custom ordered flashing .
- 8. Custom ordered flashing .
- 9. Custom ordered flashing .
- 10. Panel fastener for hot-rolled sheeting rail or for cold-bent sheeting rail.
- 11. Steel rivet (every 300mm).
- 12. EPDM tape.
- 13. Butyl tape 2x20.
- 14. Permanently elastic sealing compound.
- 15. Loose mineral wool.
- 16. Window mounting elements - acc. to woodwork supplier.
- 17. Screw or rivet - acc. to woodwork supplier.

panel thickness [mm]	min. distance from the panel edge "a" [mm]
< 150	30
≥ 150	40